



H2Pro Insulated Gutters

Data Sheet

About H2Pro

An insulated gutter engineered for efficiency.

H2Pro insulated gutters provide a high performance rainwater management solution suitable for a wide range of building types.

Manufactured in-house using membrane lined steel from Building Systems UK (Aquatite), Raintite (Fatra), WeatherFAST (Fatra) and IKO (Armourplan), H2Pro gutters can be supplied in lengths of up to 8.4m, with factory welded central joints to help speed up installation on site. Strong thermal performance is achieved through a choice of mineral wool or PIR insulation in a range of thicknesses. Designed for durability, efficiency and long term reliability, H2Pro offers a practical and sustainable solution for modern construction.

Available in Lengths up to 8400mm

U-Value of 0.51 w/m2k to 0.21W/m2k

PIR or Mineral Wool Insulation Available

Drainage Calculations Available

Tata Platinum Approved Manufacturer

Euroclad Approved Manufacturer



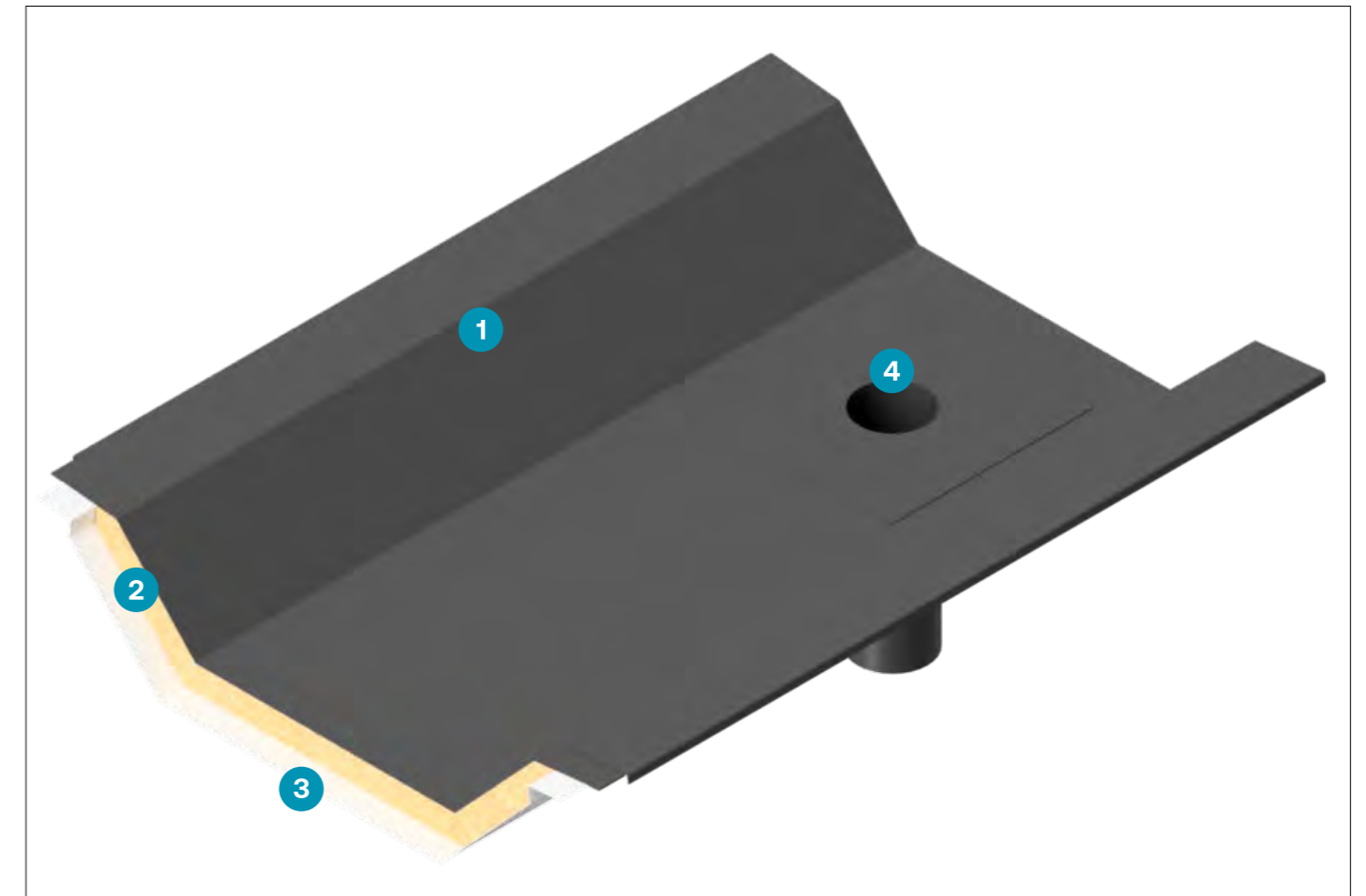
Scan to view the H2Pro Gutter video

Manufactured with Aquatite, Fatra or Armourplan

Lifting Eyes Available



Membrane Lined Gutters



Materials

- 1. Membrane Lined Steel**
A 1.2mm thick membrane thermally bonded to hot-dip galvanised steel provides a durable, waterproof barrier that prevents leaks and protects the gutter system from moisture.
- 2. Insulated Core**
Available in thicknesses up to 200mm, using mineral wool or PIR insulation to deliver excellent thermal performance and energy efficiency.
- 3. Lining**
The internal liner is supplied as standard in 0.7mm bright white polyester-coated steel, offering a smooth and durable finish.
- 4. Outlet**
Outlet positions can be pre-cut in-house with outlets fitted, or marked and cut on site by the installer.

In Service Performance

Durability

H2Pro insulated gutters use standard 1.2mm PVC roof membranes factory laminated to the steel substrate. Under normal service conditions, the system provides a durable and functional rainwater management solution with a service life in excess of 30 years.

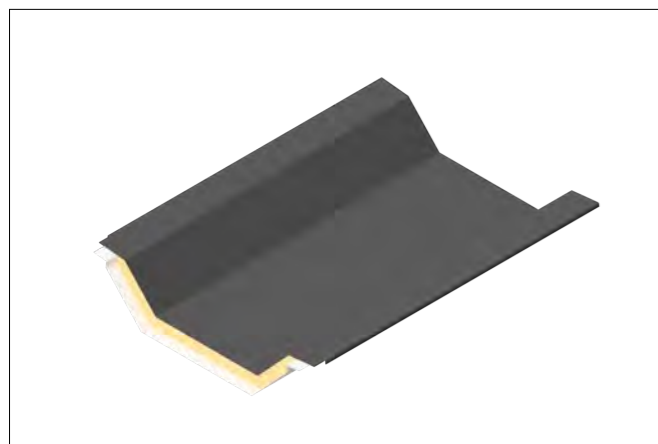
Care & Maintenance

Annual inspections and cleaning reports are recommended. Debris such as grit, leaves or litter can accumulate and may affect membrane durability. Gutters should be checked twice a year and cleaned using a soft brush and plastic shovel. Inspections must be carried out by a trained person following a risk assessment and using appropriate access equipment.

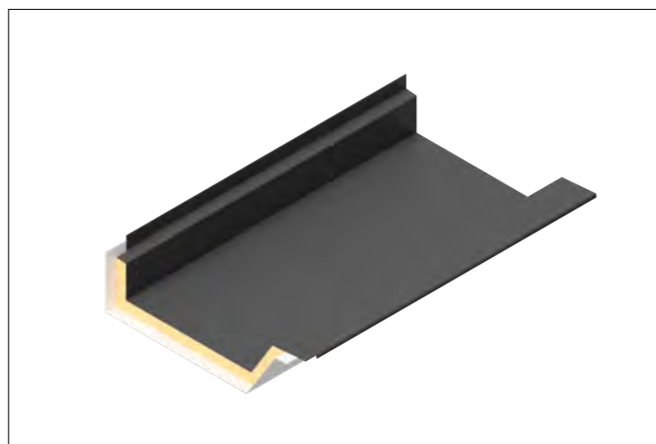
Insulated gutters for all roof configurations and layouts.

The insulated gutters in our range are engineered to deliver consistent thermal performance and reliably manage water flow across a variety of applications.

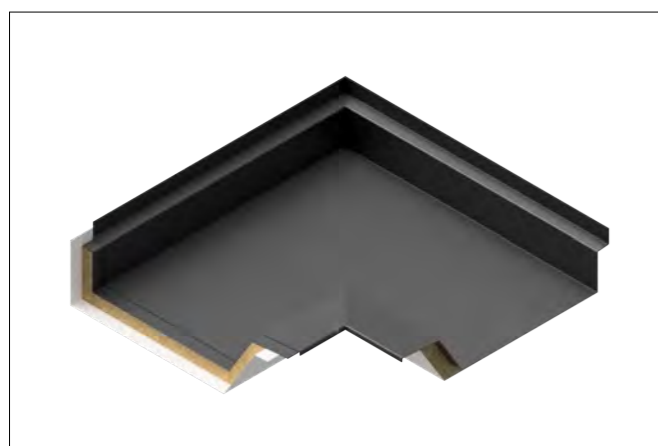
Designed to work with a range of roof and wall systems, each option provides a dependable solution that adapts to varying building requirements and installation conditions without compromising performance or efficiency.



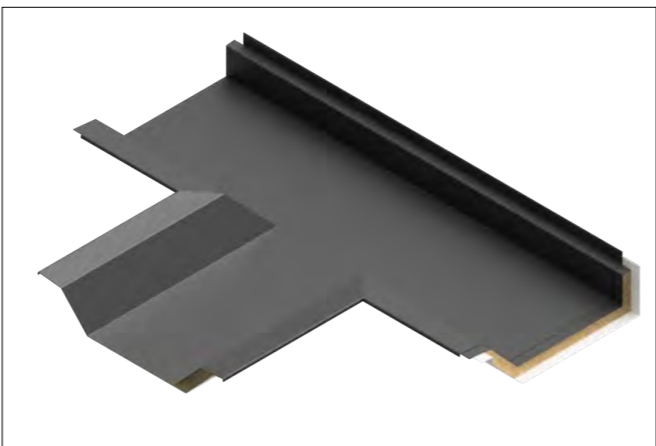
Valley Gutter



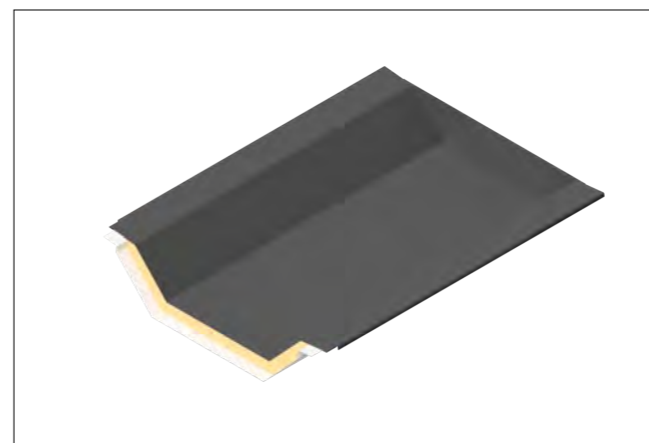
Boundary Gutter



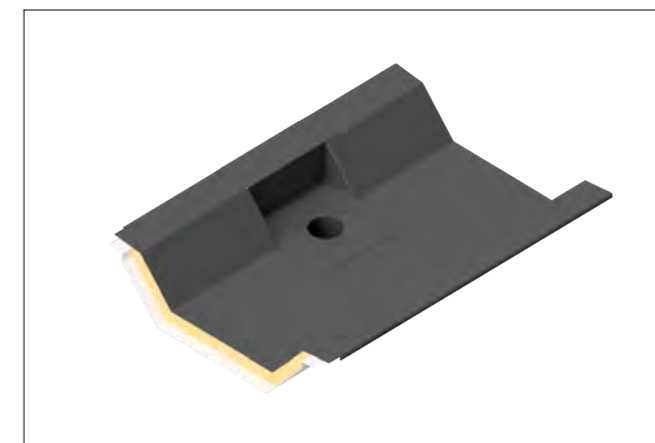
Corner Gutter



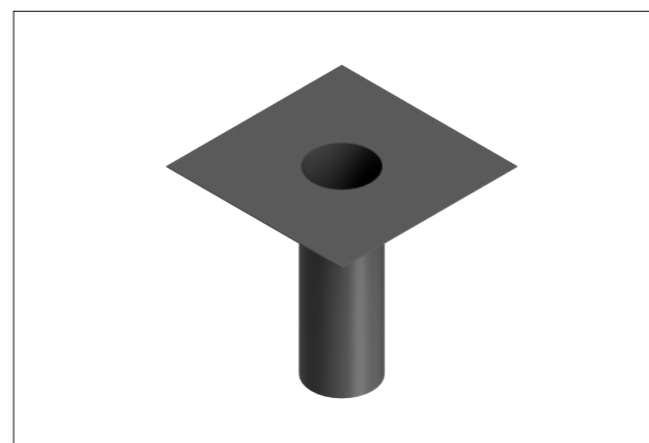
Gutter T Junction



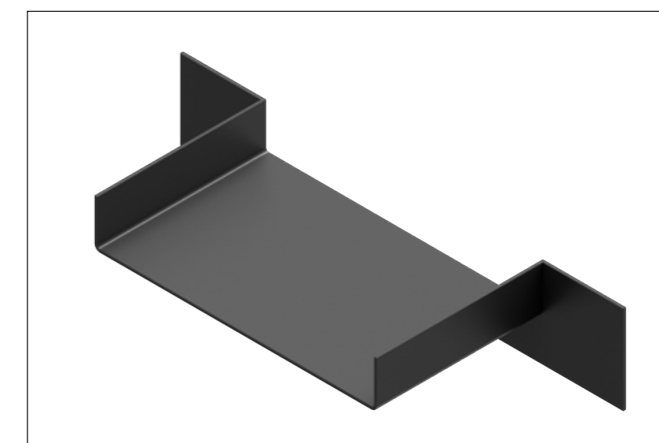
Gutter with Stop End



Side Sump Outlet



Gutter Outlet



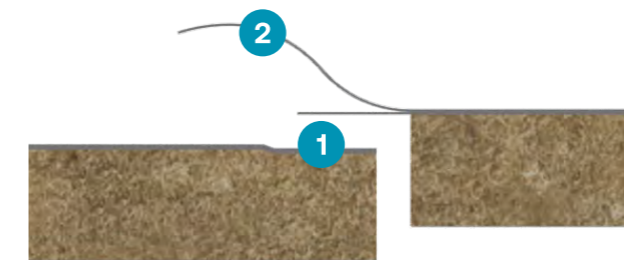
Weir



High-performance membrane solutions for insulated gutters.

Our lapping methods ensure membrane sheets are correctly overlapped and fully welded to create a continuous, watertight lining. This allows water to flow cleanly over the joints and reduces the risk of ingress.

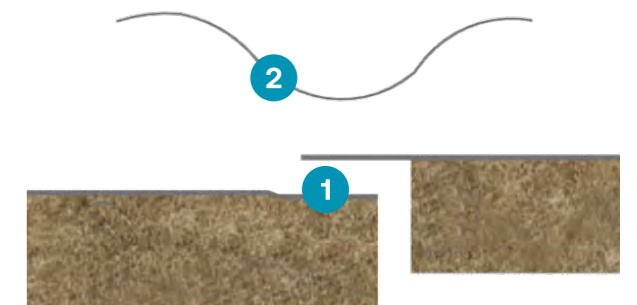
Installation is carried out in accordance with the recommendations of leading membrane manufacturers, including Raintite, WeatherFAST, IKO and Building Systems UK ensuring long-term durability and reliable performance across a wide range of building types and gutter configurations.



Raintite & WeatherFAST

1. Joggle / Step Joint
2. Integral Jointing Strip

The membrane is made of a textured PVC layer factory-bonded to hot-dip galvanised steel, with an integral jointing strip providing a 75mm overlap and a 50mm joggle for jointing.



Building Systems UK & IKO

1. Joggle / Step Joint
2. Loose PVC Strip

For gutter jointing, a loose PVC strip is centred over the joint of the overlapping joggle and welded to each gutter with a 50mm weld, in line with the membrane manufacturer's guidelines.



Jointing Method

Jointing is carried out using a hot air welding gun, the PVC membrane is tack welded in position before the 50mm section is continuously welded in two 25mm sections then finished in accordance with the membrane manufacturer's guidelines.

Membrane Liner Range

We partner with leading membrane liner manufacturers Fatra, Building Systems UK and IKO to ensure the highest standards of performance and reliability.

Our gutter systems are compatible with a wide range of liners, giving specifiers the flexibility to meet diverse project requirements. These have been hand selected as reputable and reliable manufacturers to incorporate into the H2Pro gutter system.

Membrane Liner Range



Raintite is a coated metal liner using a plasticiser-free PVC (non-plasticised polyvinyl chloride), specifically developed to slow ageing and reduce common modes of failure over time.

The membrane is thermally bonded to hot-dip galvanised steel and incorporates four additional protective layers of epoxy polyester. This combination creates a strong, durable and reliable solution for long-term gutter performance.

- Fatra membrane steel liner
- BBA certificate membrane
- Anti-slip tested
- Supplied in basalt grey RAL 7012
- 25 Year & 35 year guarantee available

Building Systems UK

A Tata Steel enterprise

Colorcoat Aquatite® is a pre-finished steel, consisting of a factory-bonded 1.2mm PVC membrane on a galvanised substrate, creating a tough, durable, non-permeable surface ideal for gutters.

Available in smooth or certified slip-resistant finishes, it offers excellent resistance to UV, heat, weathering and general wear.

- Aquatite membrane steel liner
- Available with Tata Steel's platinum plus
- Independently tested and certified to BS 7976-2
- Supplied in grey RAL 7047
- Guaranteed for 25 years



IKO Armourplan is a membrane-coated metal formed by laminating IKO Armourplan PVC onto a galvanised steel substrate. Designed for use with single-ply roofing systems, it provides a consistent, durable surface that integrates fully with the main membrane.

The coated surface allows heat welding to preformed edge details, ensuring a secure, watertight seal at gutter perimeters, upstands and other key junctions.

- Armourplan membrane steel liner
- BBA certified 05/4287
- Supplied in RAL 7046 and RAL 7015
- Slip resistant surface
- 25 Year guarantee available



WeatherFAST is a steel-based gutter lining system formed by laminating a high-quality PVC membrane onto a robust steel substrate. Designed for use in gutter refurbishment and new-build projects, it provides a durable surface that integrates fully with the surrounding membrane.

The bonded PVC finish allows heat welding to adjacent details, ensuring a continuous, watertight seal along gutter runs, outlets and junctions.

- Fatra membrane steel liner
- New improved tread pattern
- Reduce leak potential
- Define safer walking zones
- 25 year guarantee available



All guarantees and warranties are for the membrane liner only and are provided by the membrane manufacturer.

For further information, please contact a member of our sales team.

Dimensions, Materials & System Components

Dimensions:	Available in lengths up to 8400mm, Standard length 2950mm
Sole Width:	To customer order
Depth:	To customer order
Membrane Liner:	Raintite (1.2mm thick Fatra) Building Systems UK (1.2mm thick Aquatite) IKO (1.2mm thick Armourplan) WeatherFAST (1.2mm thick Fatra)
Steel Substrate Thickness:	1.2mm & 1.5mm (Raintite) 1.2mm & 1.5mm (Building Systems UK) 1.2mm (Armourplan) 1.2mm (WeatherFAST)
Internal Gutter Liner:	0.7mm bright white polyester coated steel
Insulation Types:	Mineral Wool PIR
Insulation Thickness:	Mineral Wool: 25mm – 200mm (200mm available as two 100mm layers) PIR: 20mm – 200mm
Gutter Components:	Stop Ends T Pieces & Corners Sumps Leaf Guards Downpipes Aluminium PVC-coated straight or tapered outlets Factory-assembled loose tapered or siphonic outlets Hopper Boxes Weirs & Tell-Tale Overflows
Guarantees:	25, 35 year membrane guarantee, depending on the manufacturer.

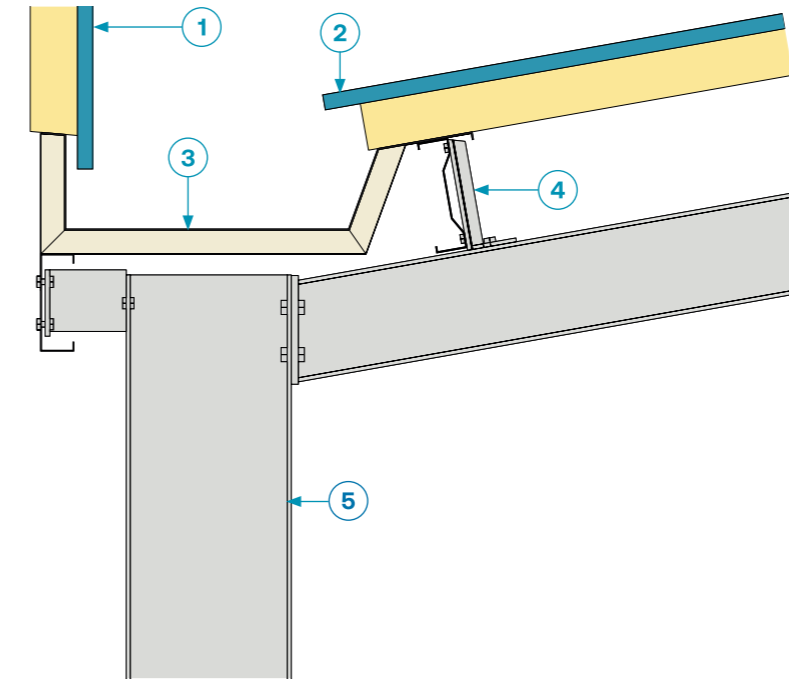
Typical Insulation Performance, Thickness & Weight

Mineral Wool Insulation						
Core Thickness (mm)	50	60	70	80	90	100
U Values (Wm2k)	0.63	0.54	0.46	0.41	0.36	0.32
Weight (Kg/m ²) 1.2mm outer / 0.7mm liner*	26.5	28.5	30.4	32.4	34.5	36.5

PIR Insulation						
Core Thickness (mm)	50	60	70	80	90	100
U Values (Wm2k)	0.41	0.35	0.30	0.26	0.24	0.21
Weight (Kg/m ²) 1.2mm outer / 0.7mm liner*	18.4	18.8	19.1	19.5	19.9	20.3

*Based upon 1m² of top sheet, insulation & liner

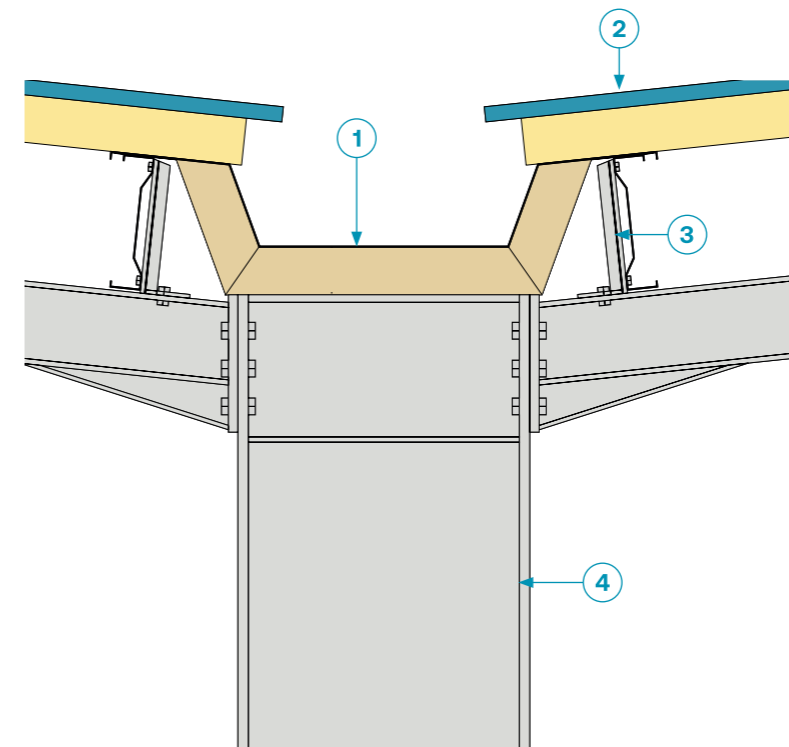
Example: Boundary wall Gutter with Parapet



Typical Applications

1. Insulated Wall Panel
2. Insulated Roof Panel
3. Boundary Gutter (With 50mm PIR Insulation)
4. Purlins
5. Steel Structure

Example: Valley Gutter



Typical Applications

1. Valley Gutter (With 100mm Mineral Wool Insulation)
2. Insulated Roof Panels
3. Purlins Steel Structure



Proteus Facades
1 Gerrard Place, Skelmersdale
Lancashire, WN8 9SU

+44 (0)151 545 5075
info@proteusfacades.com

Published date: 04/26
Version: 1.0